

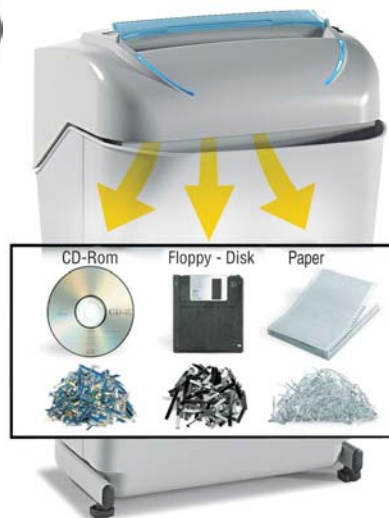


DhonaadhiTM
Hitec Innovations

**Multipurpose and Multimedia
"Energy Smart" shredder**

KOBRA 240 SS5

Throat width:	240 mm
Shred size:	5,8 mm. straight cut
Sheet capacity (A4/70 gr. paper):	27/29
Security Level DIN 32757:	2
"ENERGY SMART" management system:	yes
Speed:	0,09 m./sec.
Noise level:	55 dba
Credit cards:	yes
CD-Rom:	yes
Floppy-Disk:	yes
Voltage:	230 V.
Power:	460 Watt
Dimensions (WxDxH):	37x33x56 cm.
Weight:	14 Kg.



Multipurpose and Multimedia straight cut shredder equipped with "ENERGY SMART" system with optical illuminated indicators for **zero power consumption in Stand-by mode** and **environmental protection**.

- **24 hours continuous duty motor**
- Heavy duty chain drive with steel gears "SUPER POTENTIAL POWER UNIT"
- Automatic Start/Stop through electronic eyes with stand-by function
- Automatic Stop when waste bin is out with light signal
- Does not require plastic bags
- Carbon hardened cutting knives take staples and paper clips
- Convenient 35 liters removable waste bin equipped with a special mechanism to **separate shredded paper from plastic shreds** of credit cards, CD-Rom and Floppy-Disks
- Motor thermal protection
- Certification marks: CB – CSA – CE
- Manufacturer: Elcoman – Via Gorizia n° 9, 20030 Bovisio Masciago, (Milan) – Italy
- Packaging: 1 unit per box
- EAN Barcode 8 026064 997218



Removable waste bin with a special mechanism to **separate shredded paper from plastic shreds** of credit cards, CD-Rom and Floppy-Disks



"ENERGY SMART" Management system for **zero power consumption in Stand-by mode**



DhonaadhiTM
Hitec Innovations

Old No.16, New No.12, First Floor,
(Opp to Vijayanagar Ayyappan Saba)
Ramnagar 2nd Street, Velachery,
Chennai - 600 042.

☎ 044 - 399 22 645

www.dhonaadhi.in