

---

## 2Mp CMOS Full HD Intelligent Auto-Tracking Network PTZ Dome Camera



### Model

**DH-SD6582-HNI:** 20x optical zoom, 2Mp Exmor CMOS, 25fps@1080P, IP67, IK10 optional, Sony Full HD Block Camera, PAL

**DH-SD6582N-HNI:** 20x optical zoom, 2Mp Exmor CMOS, 30fps@1080P, IP67, IK10 optional, Sony Full HD Block Camera, NTSC

**DH-SD6582A-HNI:** 20x optical zoom, 2Mp Exmor CMOS, 25fps@1080P, IP67, IK10 optional, Dahua Full HD Block Camera, PAL

**DH-SD6582AN-HNI:** 20x optical zoom, 2Mp Exmor CMOS, 30fps@1080P, IP67, IK10 optional, Dahua Full HD Block Camera, NTSC

## Features

### Camera & Video

- 1/3" 2 Megapixel progressive scan Exmor CMOS
- Powerful 20x optical zoom and 12x digital zoom(SD6582-HNI)
- Powerful 20x optical zoom and 16x digital zoom(SD6582A-HNI)
- H.264/MJPEG & Dual-stream video encoding and JPEG image capture
- Max 25/30fps@1080P resolution
- WDR(SD6582-HNI), DWDR(SD6582A-HNI), Day/Night(ICR), Auto iris, Auto focus, AWB, BLC
- Up to 24 privacy masking areas
- Built-in Web server, NVR, CMS(PSS/DSS) & DMSS

### Dome Drive

- Max 400 °/s pan speed, 360° continuous pan rotation & auto flip with no blind spot monitor
- Up to 255 preset, 5 auto scan, 8 tour, 5 pattern
- Auto recognition of general protocols such as DH-SD, Pelco-P/D, and etc
- Speed setup according to the focal distance, auto rotation speed adjust in accordance with the lens zoom rate
- Auto restore to previous PTZ and lens status after power failure
- Time Task: Auto activation of Preset/Scan/Tour/ Pattern by preset-time
- Idle Motion: Call preset/tour and etc operations after idle for the specified time (including the idle status after the system boots up)
- OSD and operation prompts of various languages
- Build-in 2/1 channel alarm input/output (7/2 alarm in/out optional)
- Intelligent 3D positioning function
- IP67 all-environments protection and built-in auto constant temperature control device
- 4000V thunder, surge and wave-proof protection
- Easy installation and 100% waterproof with quick-installation port adopted

### Intelligent Function

- **Auto-tracking**

Support three auto-tracking modes: single-scene, multiple-scene and panorama-scene.

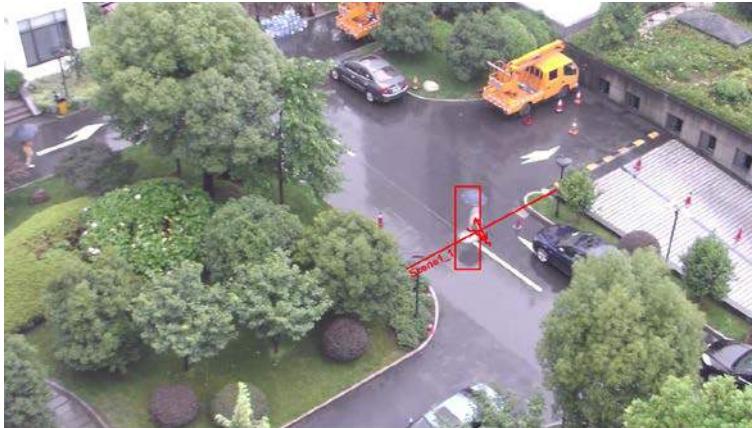


- **IVS (Intelligent Video Surveillance)**

Tripwire, Cross Warning Zone, Perimeter Protection, Loitering Detection, Abandoned Object Detection, Missing Object Detection, Illegal Parking, Fast Moving and etc.

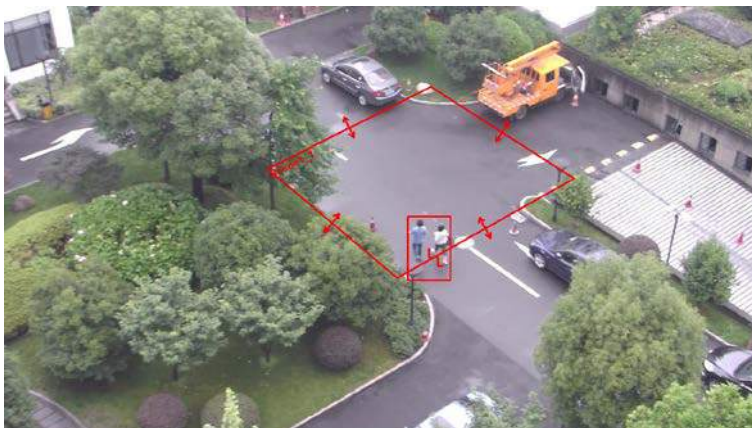
- > **Tripwire**

Detect the object crossing the tripwire.



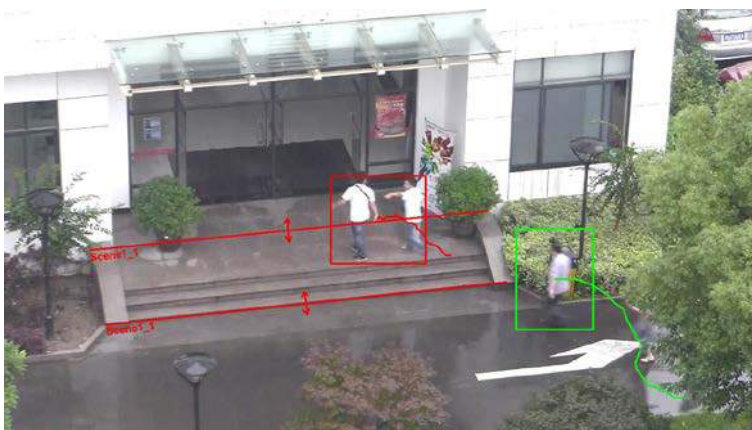
- > **Cross Warning Zone**

Detect the moving object crossing the specified zone or in the specified zone.



- > **Perimeter Protection**

Detect the object crossing the perimeter.





> **Loitering Detection**

Detect the object stays in the specified zone than the set time.



> **Abandoned Object Detection**

Detect any abandoned object in the specified zone.



> **Missing Object Detection**

Detect any missing object in the specified zone.



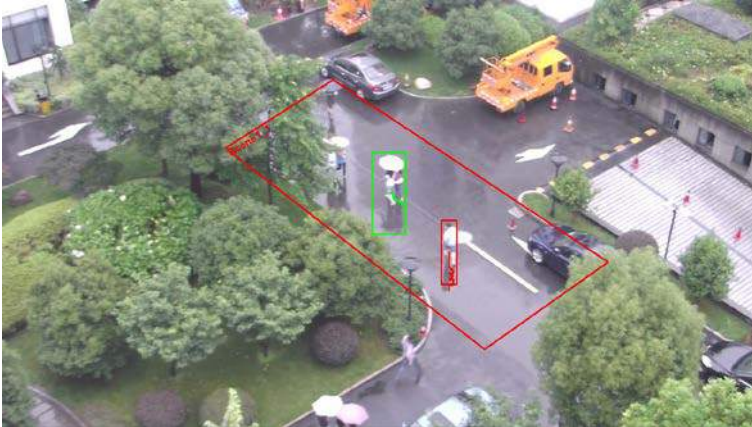
> **Illegal Parking**

Detect any illegal parking event in the specified zone.



> **Fast Moving**

Detect any fast moving object in the specified zone.



- Support manual/auto tracking triggering, trigger events include Targeting, Zoom, Tracking, Recording, Snapshot, Alarm and etc.

## Specifications

Model	DH-SD6582-HNI		DH-SD6582A-HNI	
	DH-SD6582N-HNI		DH-SD6582AN-HNI	
<b>Camera</b>				
Image Sensor	1/3" progressive scan Exmor CMOS			
Effective Pixels	Approx. 2 Megapixels			
Lens	20x optical zoom			
	f=4.7mm(Wide)~94.0mm(Tele), F1.6~F3.5			
Digital Zoom	12x		16x	
Horizontal Viewing Angle	55.4°(Wide)~2.9°(Tele)			
Min. Object Distance	10mm(wide)~800mm(Tele)		10mm(wide)~1000mm(Tele)	
Min. Illumination	Color: 0.5 lux@F1.6, B/W: 0.095 lux@F1.6		Color: 0.05Lux@F1.6 B/W: 0.005Lux@F1.6	
Electronic Shutter	1/1 ~ 1/10,000s		1/1 ~ 1/30,000s	
White Balance	Auto, ATW, Indoor, Outdoor, Outdoor Auto, Sodium Vapor Lamp Fix/Auto, One-push, Manual		Auto, ATW, Indoor, Outdoor, Outdoor Auto, Sodium Vapor Lamp Fix/Auto, Manual	
WDR	WDR		DWDR (Digital WDR)	
Day/Night	Auto(ICR) / Color / B/W			
S/N Ratio	More than 50 dB			
Privacy Masking	ON/OFF (up to 24 privacy masking areas)			
Analog Video Output	BNC(1.0Vp-p / 75Ω), PAL / NTSC			
<b>Video &amp; Audio</b>				
Video Compression	H.264 / MJPEG			
Image Resolution	1080P(1920×1080) / 720P(1280×720) / D1(704×576/704×480) / CIF(352×288/352×240)			
Encoding Speed	Main Stream	PAL: 1080P / 720P(1~25fps)		
		NTSC: 1080P / 720P(1~30fps)		
	Extra Stream	PAL: D1 / CIF (1~25fps)		
		NTSC: D1 / CIF (1~30fps)		
Bit Rate	32K~8Mbps			
Audio Compression	G.711a(32Kbps) / AMR(10.2Kbps)			
Audio Mode	Off / Audio input / Audio output			
<b>Dome Drive</b>				
Pan/Tilt Range	Horizontal: 0°~360°endless, Vertical: -2°~90° auto flip 180° to continue monitor			
Manual Control Speed	Horizontal: 0.1°~300°/s, Vertical: 0.1°~150°/s			
Preset Speed	Horizontal: 400°/s, Vertical: 300°/s			
Preset	255			
PTZ Mode	5 Auto Pattern, 8 Auto Tour, 5 auto scan			
3D Positioning	Yes			

Speed Setup	Human-oriented focal Length/ speed adaptation
Info Display	Time, Location, Dome title, Dome coordinates, Temperature, Alarm, and etc.
Power up Action	Auto restore to previous PTZ and lens status after power failure
Idle Motion	Activate preset/scan/tour/ patter if there is no command in the specified period.
Time Task	Auto activation of Preset/Scan/Tour/ Pattern by preset-time
Alarm	2/1 alarm input/output (7/2 optional), Triggering preset/Tour/Pattern/Scan//Alarm output
Protocol	DH-SD, Pelco-P/D, Auto recognition of general protocols
<b>Intelligent Function</b>	
Auto Tracking	Single-scene, multiple-scene, panorama-scene
IVS	Tripwire, Cross Warning Zone, Perimeter Protection, Loitering Detection, Abandoned Object Detection, Missing Object Detection, Illegal Parking, Fast Moving and etc.
Tracking Trigger Mode	Manual / Auto (alarm triggered)
Tracking Trigger Event	Targeting, Zoom, Tracking, Recording, Snapshot, Alarm and etc.
<b>Network</b>	
Ethernet	RJ-45 (10/100Base-T)
Network Functions	IPv4/IPv6, HTTP, HTTPS, SSL, TCP/IP, UDP, UPnP, ICMP, IGMP, SNMP, RTSP, RTP, SMTP, NTP, DHCP, DNS, PPPOE, DDNS, FTP, IP Filter, QoS, Bonjour, ONVIF
Max Remote Users	20 Users simultaneously
Processor	TI DaVinci Series DSP
Operating System	Embedded LINUX
Resource	Simultaneous remote monitoring, remote operation & local recording
Remote Operation	Monitor, PTZ control, Voice Intercom, System setting, Playback, File download, Log information, Maintenance & Upgrade
Local Recording	Micro SD, Max 32GB
User Interface	WEB, CMS(DSS / PSS), DMSS, NVR
<b>General</b>	
Power Supply	AC 24V/3A ( $\pm 10\%$ )
Power Consumption	15W(Indoor), 50W(Outdoor, heater on)
Working Temperature	-40°C ~ 60°C
Working Humidity	<90%
Protection Level	IP67, 4000V thunder, surge and wave-proof protection
Dimension	$\Phi 222(\text{mm}) \times 324 (\text{mm})$
Weight	5.0kg